

NOTES:

1. DESCRIPTION:

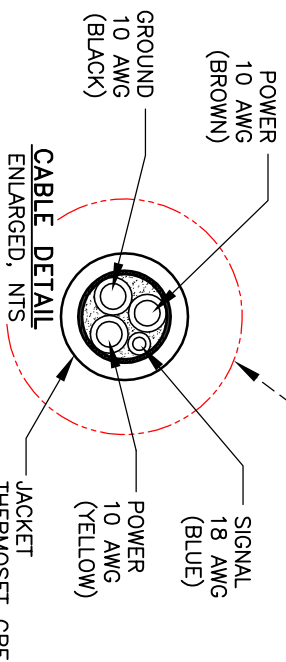
- 1.1 COMMERCIAL EVSE BREAKAWAY CONNECTOR FOR USE WITH LEVEL II CHARGING STATIONS.
 - A) DESIGNED FOR UPWARDS OF 300 LB PULL-AWAY ANTI-THEFT PROTECTION.
 - B) EXCESSIVE ELECTRICAL STRAIN BREAKAWAY AT 30 TO 50 LB - NEC625.19
 - C) DESIGNED TO PULL AWAY TO AVOID DAMAGING THE VEHICLE OR CHARGING STATION DUE TO NUISANCE, DRIVE AWAY OR ROLL AWAY INCIDENTS.
 - D) BREAKAWAY CONNECTOR MEETS UL SAFETOUCH REQUIREMENTS
- 1.2 MEETS REQUIREMENTS FOR USE WITH ELECTRICAL VEHICLES FOUND IN UL2251, SAE J1772 AND NEC625.19

2. CABLE:

- 2.1 UL APPROVED TYPE EV 4-CONDUCTOR 600V BLACK CPE CABLE FOR USE IN INDOOR AND OUTDOOR APPLICATIONS.
- 2.2 CLASS K, STRANDED AND SOFT DRAWN TINNED COPPER CIRCUIT CONDUCTORS IN HEAT AND MOISTURE RESISTANT EPR INSULATION.
 - A) BLACK 10 AWG, GROUND
 - B) BROWN 10 AWG, POWER
 - C) YELLOW 10 AWG, POWER
 - D) BLUE 18 AWG, SIGNAL
- 2.3 MEETS REQUIREMENTS FOR USE IN EVSE FOUND IN NEC 400.

3. CONNECTOR MOLDING:

- 3.1 INTEGRALLY MOLDED CONNECTORS AND STRAIN RELIEFS ONTO CPE CABLE JACKET TO PROVIDE A WATER TIGHT AND ENVIRONMENTALLY PROTECTED CONNECTION.
 - A) 4-PIN MALE CONNECTOR
 - B) 4-CONTACT FEMALE CONNECTOR
- 3.2 CONNECTOR MOLDING MARKED ACCORDING TO SECTION 70 IN UL2251.



This entire document and all information therein is proprietary to and the exclusive property of Integro, LLC, New Britain, CT. Object, and shall not be copied, disclosed or made available to any person, firm or corporation, in whole or in part, or otherwise used without prior written permission of Integro, LLC, New Britain, CT.

SCALE 1:2

Integro

30 Peter Court
New Britain, CT



**EV BREAKAWAY
CONNECTOR**